

PART OF THE SW. 1/4, OF SECTION 15, T.7N., R.1E., S.L.B. & M.

418

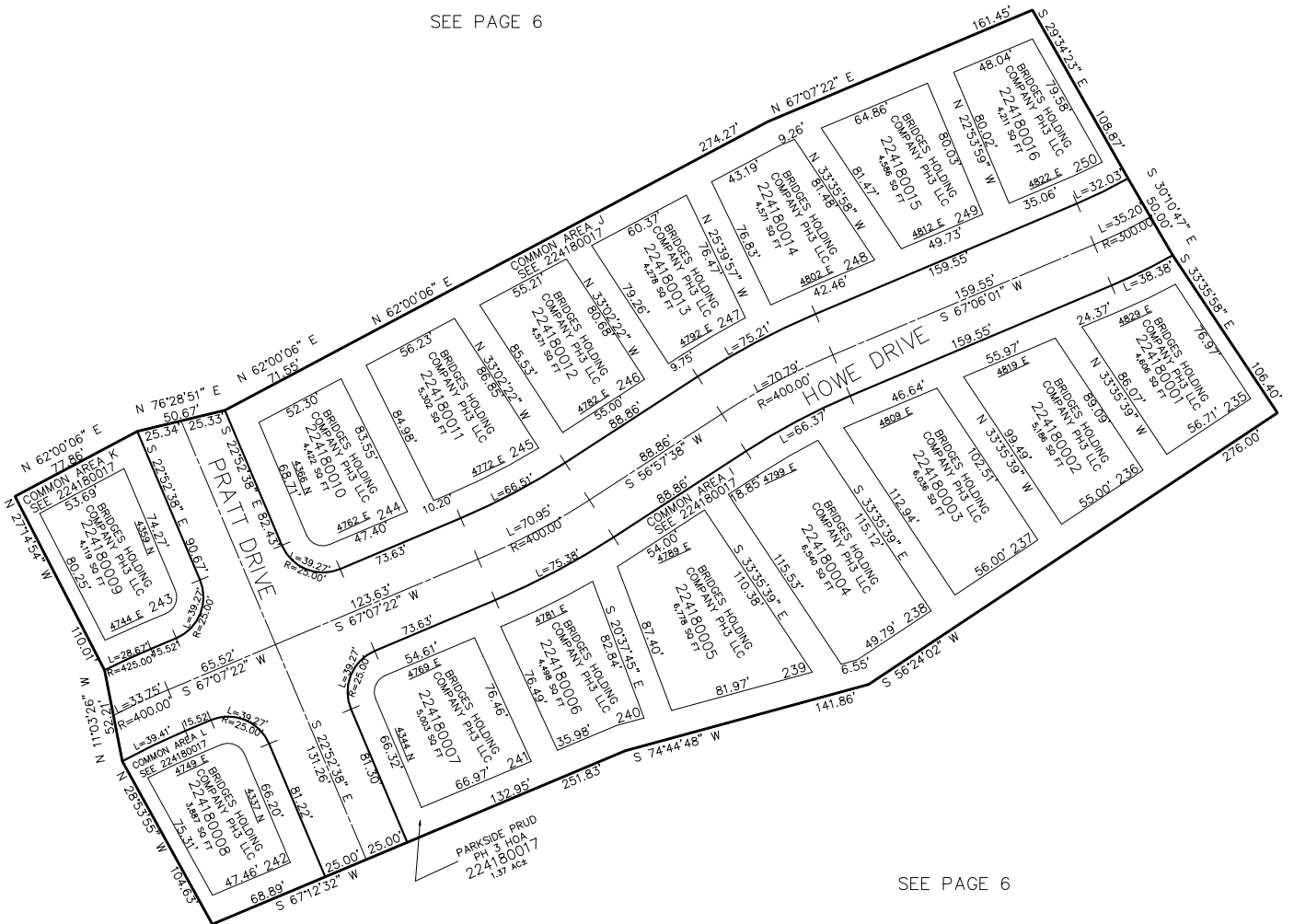
PARKSIDE PRUD PHASE 3

IN WEBER COUNTY

TAXING UNIT: 203

SCALE 1" = 50'

SEE PAGE 6



SEE PAGE 6

10' UTILITY & DRAINAGE EASEMENTS EACH
SIDE OF PROPERTY LINES AS INDICATED
BY DASHED LINES EXCEPT AS OTHERWISE
SHOWN.

FOR COMPLETE SURVEY DATA SEE
ORIGINAL DEDICATION PLAT IN
BOOK 96, PAGE 01-02 OF RECORDS.

ADDRESS AFFIDAVIT E#3299119